

Installation Instructions

安裝說明書

FRONT LOWER SKID PLATE

前下護板

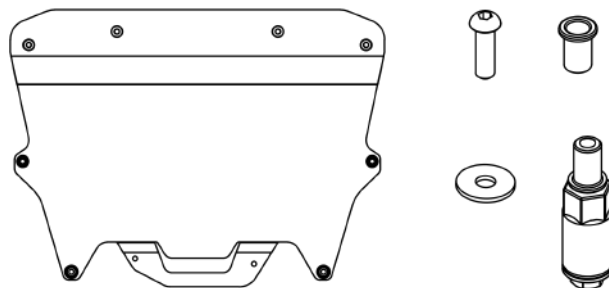
#Q1012

Application 適用車型

Toyota GR Yaris '20- (GXPA16)

Components 內含配件

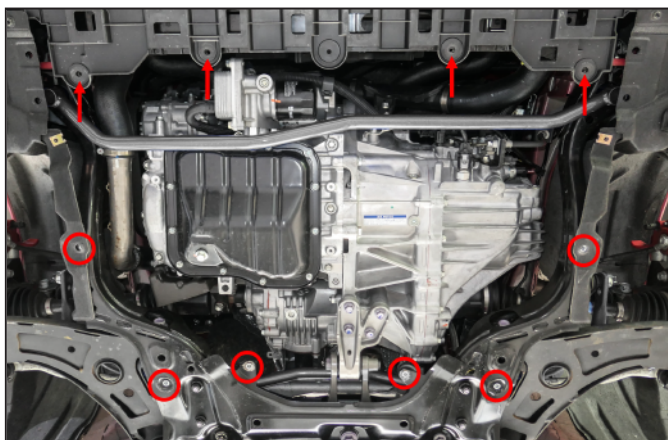
- ① Skid plate 下護板1pcs
- ② Bolt - hex button head 內六角半圓頭螺絲
(M6x1.0x20)6pcs
- ③ Rivet nut 拉帽 (M6x1.0)6pcs
- ④ Washer 華司 (18.8x6.4x1.5)6pcs
- ⑤ Rivet nut tool 拉帽安裝工具1pcs



Caution 注意事項

- Installation is recommended to be performed by licensed mechanics with necessary tools to ensure safety. Incorrect installation may cause injury, damage to the product or vehicle. 安裝建議由合格的技師及工具執行以確保安全。安裝錯誤可能對人員、產品及車輛造成傷害。
- Note the routing of wires and cables before installation, or please refer to factory manual. 安裝前請事先記下線路的安裝路徑及位置以維持原廠配置。有疑問時請參考原廠手冊。
- Tighten bolts and nuts firmly by using handtools, and with specified torque if mentioned. 安裝過程請使用手動工具確實鎖緊螺帽及螺絲。如有特別註明請依照說明指示的扭力上鎖。

Instructions 安裝說明



1. Remove the factory skid plate/splash guard from the vehicle.

將原廠的下護板卸下。

2. Follow the below steps to install the rivet nuts to the 6 rear mounting holes circled in the picture.

按照下列步驟將拉帽安裝至下護板後端的6個鎖點：

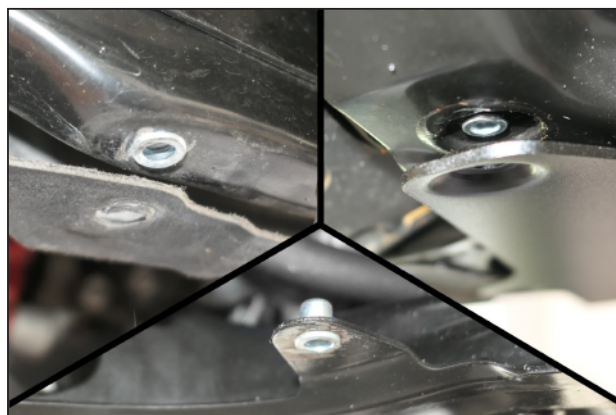
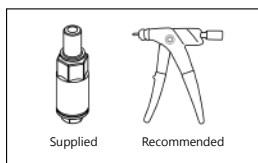
① Drill the holes to 9mm.

將鎖孔鑽至9mm

② Install the rivet nuts to the mounting holes using the supplied basic rivet nut tools and please hand tighten only.

We also recommend using rivet gun to better seat the rivet nuts.

使用附件中的簡易拉帽安裝工具，以手動方式將拉帽安裝至鎖孔。
或建議可以使用拉帽槍安裝，確保更好的拉帽緊密度。



3. Install the skid plate onto the vehicle.

For the rear six mounting holes (circled) : supplied M6 bolts & washers

For the front four mounting holes (arrowed) : reuse the factory hardware

將下護板安裝至車輛：

後端六個鎖孔(圈起處) 請使用附件中的M6螺絲及華司。

前端四個鎖孔(箭頭處) 請沿用原廠下護板螺絲及華司。

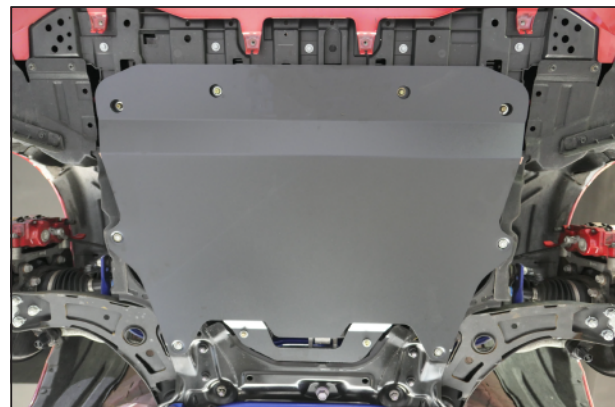


Illustration of installed state 安裝完成示意圖