

Installation Instructions

安裝說明書

BRAKE MASTER CYLINDER STOPPER

煞車總泵頂桿

#Q1111

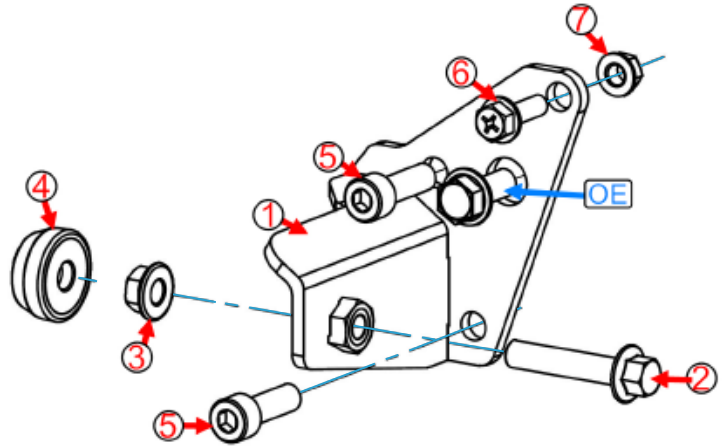
Application 適用車型

Toyota Corolla Altis '19-

*For LHD Use Only / 僅適用左駕車型

Components 內含配件

- ① Bracket 頂桿支架.....1pcs
- ② Bolt-Flange 螺絲-凸緣 (M8x1.25x40).....1pcs
- ③ Nut-Flange 螺帽-凸緣 (M8x1.25).....1pcs
- ④ Rubber stopper 橡膠墊塊.....1pcs
- ⑤ Bolt-Socket 螺絲-內六角 (M8x1.25x20).....2pcs
- ⑥ Bolt-Flange 螺絲-凸緣 (M6x1.0x20).....1pcs
- ⑦ Nut-Flange 螺帽-凸緣 (M6x1.0).....1pcs



Instructions 安裝說明

1. Remove the battery from vehicle.

拆卸電瓶。

2. Remove the bolt that secures the plastic wire duct beside the brake master cylinder.

拆卸剎車總泵旁側的線路固定盒螺絲。

3. Install ① Bracket using supplied hardware to indicated location:

依照圖片標示位置·使用以下配件將①頂桿支架安裝至車輛:

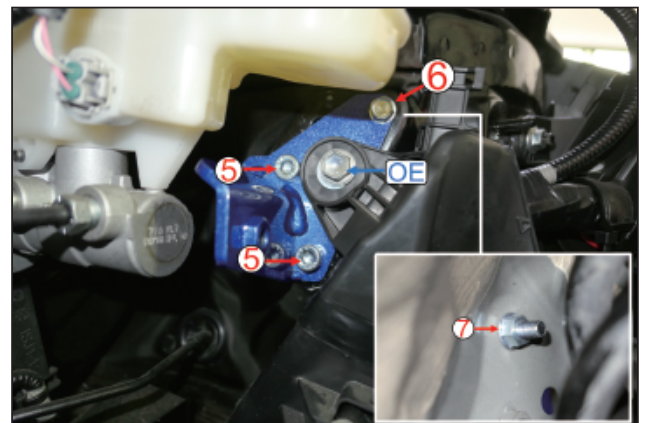
⑥ Flange bolt 凸緣螺絲 (M6)

⑦ Flange nut 凸緣螺帽 (M6)

(Tighten to ⑥ from fender well/ 從輪拱內與⑥對鎖安裝)

⑤ Socket bolt 內六角螺絲(M8)

OE Reuse the OE bolt 沿用原廠螺絲



Instructions 安裝說明

4. Install ④ Rubber stopper to the bracket using below hardwares.

使用以下配件，將 ④ 橡膠墊塊安裝至頂桿支架上

② Flange bolt 螺絲-凸緣螺絲 (M8)

③ Flange nut 凸緣螺帽 (M8)

5. Adjust the length. Once the rubber part contacts the master cylinder, tighten extra 2~3 threads to give it support against the master cylinder.

調整長度，當橡膠部分觸及煞車總泵時，再鎖緊 2~3 牙使其產生推力頂住總泵。

6. Reinstall the battery.

將電瓶安裝復原。

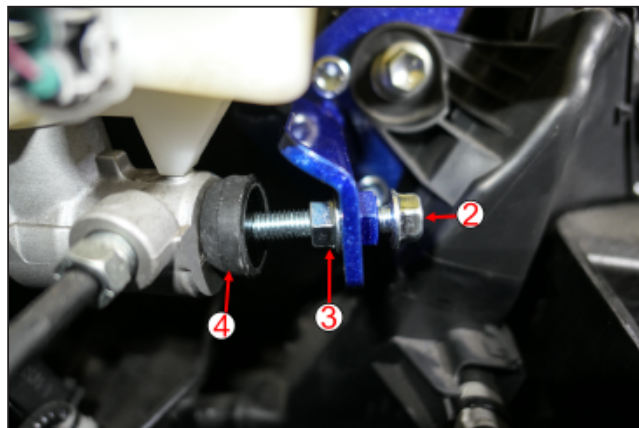


Illustration of installed state 安裝完成示意圖

Caution 注意事項

- Installation is recommended to be performed by licensed mechanics with necessary tools to ensure safety. Incorrect installation may cause injury, damage to the product or vehicle.
安裝建議由合格的技師及工具執行以確保安全，安裝錯誤可能對人員、產品及車輛造成傷害。
- Note the routing of wires and cables before installation, or please refer to factory manual.
安裝前請事先記下線路的安裝路徑及位置以維持原廠配置，有疑問時請參考原廠手冊。
- Tighten bolts and nuts firmly by using handtools, and with specified torque if mentioned.
安裝過程請使用手動工具確實鎖緊螺帽及螺絲，如有特別註明請依照說明指示的扭力上鎖。