

Installation Instructions

安裝說明書

FRONT SWAY BAR

前防傾桿

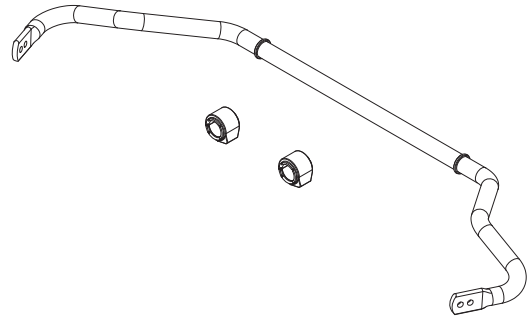
#Q1292

Application 適用車型

HONDA CR-V 6th 2023-Present

Components 內含配件

- ① Sway bar 防傾桿1PCS
- ② Sway bar bushing 防傾桿橡皮.....2PCS



Caution 注意事項

- Installation is recommended to be performed by licensed mechanics with necessary tools to ensure safety. Incorrect installation may cause injury, damage to the product or vehicle. 安裝建議由合格的技師及工具執行以確保安全。安裝錯誤可能對人員、產品及車輛造成傷害。
- Note the routing of wires and cables before installation, or please refer to factory manual. 安裝前請事先記下線路的安裝路徑及位置以維持原廠配置。有疑問時請參考原廠手冊。
- Tighten bolts and nuts firmly by using handtools, and with specified torque if mentioned. 安裝過程請使用手動工具確實鎖緊螺帽及螺絲。如有特別註明請依照說明指示的扭力上鎖。

Instructions 安裝說明

Please see below indications and install the bushings to correct direction:

安裝時請注意，橡皮有內外側方向之區別：

Inner side:

內側

Flat surface (metal ring inner side covered with rubber, work as a bumper against the sway bar retaining ring)

平整面 (鐵環內圈有橡膠包覆，與桿身定位環接觸增加緩衝)



Outer side:

外側

Recessed hole (metal ring inner side not covered with rubber and has part-number stamp 111323 on the top)

凹陷面 (鐵環內圈無橡膠包覆，且上方有標示編號111323)

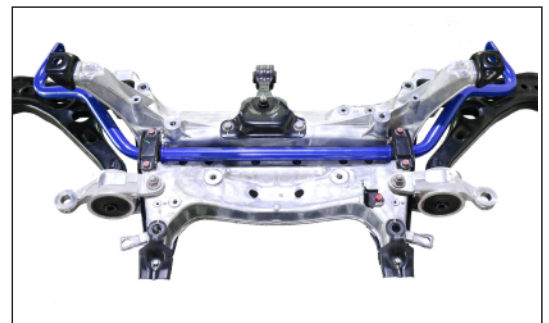
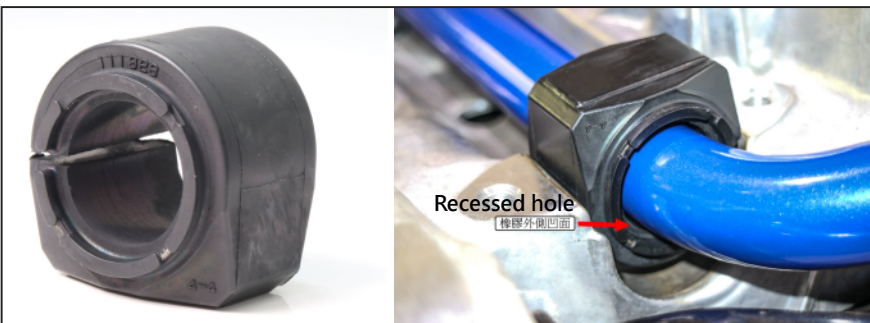


Illustration of installed state 安裝完成示意圖